

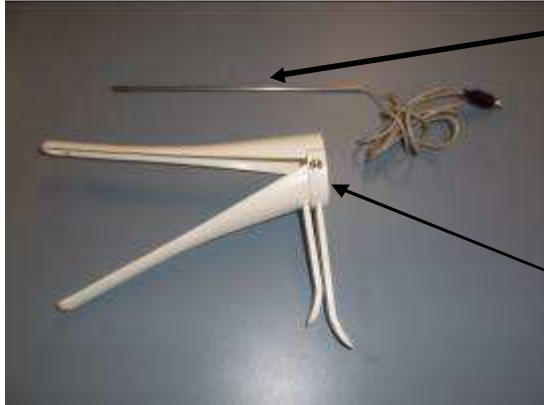


Lighting

Rilsan speculum USER GUIDE



Lighting with stemp-lamp



Stemp-lamp (ref 016320)

Speculum (ref 007180)



Insert the Stemp-lamp through the 2 brackets of the speculum

Connect the Stamp-Lamp to the battery

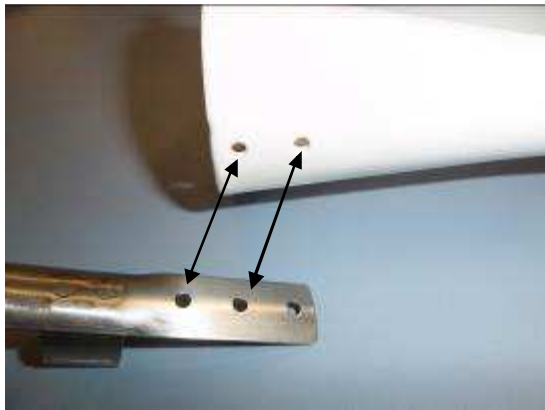
Lighting with Lumistyl



Speculum (ref 007180)

Lumistyl lighting (ref 007187)
Metallic holder

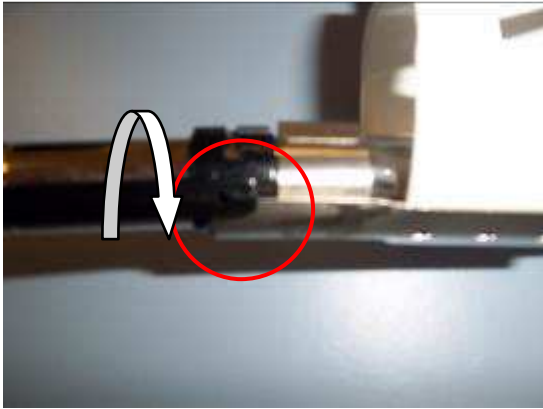
Lumistyl lamp



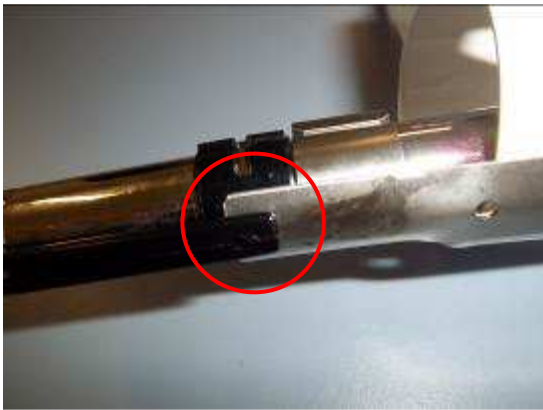
Rivet the metallic part on 2 dedicated holes of the speculum (2 rivets are supplied).



Insert the Lumistyl lamp into the metallic holder



Turn the black part from OFF position



To ON position