



**IMAGo™**

Designed to keep you on the go





## Introducing the new generation of ImaGo fertility and pregnancy scanners.

Offering unparalleled accuracy and ease of use.

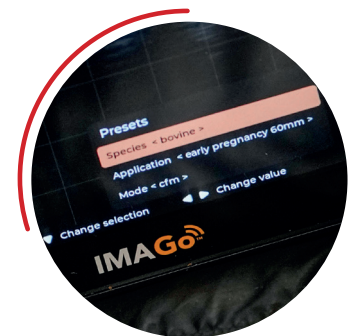
### On the go reproduction focus

ImaGo is tailored for bovine vets on the go. ImaGo's rugged, portable design and good image quality ensures you're always ready for high-quality care, when working across multiple farms and to busy schedules thus reducing the time and cost up to 10%.



## Quick start and seamless scanning process

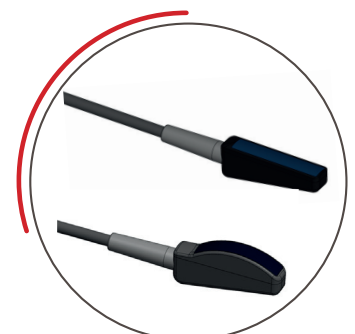
- Screen form factor and a choice of the pre-sets species-specific configurations ensures quick start process that only takes couple of minutes to start.



- Comfortable: wrist or chest mount options in combination with lightweight (1.18 kg) allows to reduce strain during long days and speed the scanning process. No need to worry about recording the time on the farm, ImaGo does it for you. It switches on when you start scanning automatically.



- Versatile probes: 128 elements curved or linear probes versions to suit different needs.





- Sound-Link technology ensures connection with mobile device and goggles to share or save the ultrasound image, train students or engage with your customers.

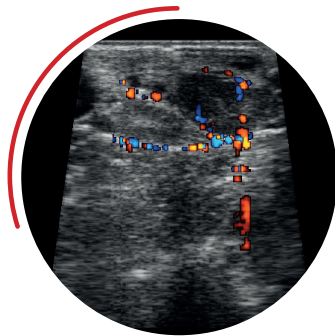


## Built to keep you scanning



- ImaGo's long-lasting, interchangeable battery provides up to four hours of continuous use and can be charged on-the-go in your car between farms due to the Smart-Beam technology.

- Shield-Tech technology makes ImaGo fully waterproof, designed to IP67 standard and rugged - eliminating downtime caused by damage, or wear-and-tear. It ensures biosecurity and saving the time of cleaning when moving between farms.



## Want to detect non-pregnancy earlier?

- With colour flow doppler mode ImaGo helps detect non-pregnant cows earlier saving up to £3 per day per cow.

## Efficiency you can rely on

- ImaGo's simple interface and innovative features help you **get more done with less effort**. Speed up your workflow, reduce downtime, and stay flexible, no matter where your day takes you.

“

### Testimonial

You can immerse ImaGo scanner fully in water to clean it, which really helps with our bio security and making sure that we're not transferring any unwanted pathogens from farm to farm.

**Victoria White**  
**Veterinary Surgeon**  
 FarmVets South West, UK





IMV TECHNOLOGIES. FOR LIFE.



Robert Cassou  
Bovine straw inventor

IMV Technologies representative offices

IMV Technologies subsidiaries

IMV Technologies distributors



**France HQ**

IMV Technologies  
ZI n°1 Est  
61300 L'Aigle

+33 2 33 34 64 64  
contact@imv-technologies.com  
www.imv-technologies.com

**North America**

IMV technologies USA  
9501 Louisiana Ave N, Suite 300  
Brooklyn Park, MN 55445

+1 763 488 1881  
contact@imvusa.com  
www.imv-technologies.com

**Brazil**

IMV Technologies Brazil  
R. Vitoriano dos Anjos, 1081  
13041-317 Campinas-SP

+55 (19) 2513-3444  
contato@imvbrasil.com.br  
www.imv-technologies.com

**China**

IMV Technologies China  
Room 510, Building 1,  
NO.800, Naxian Road,  
Pudong District, Shanghai,  
201203 China

+86 21 50586918 or 50586948  
www.imvchina.com  
contact@imvchina.com

**India**

IMV Technologies India  
(IMV India Pvt. Ltd.)  
Plot No 750 Phase V, Udyog Vihar  
Girgaon 122016 (Haryana)

+91 124 4770707  
www.imvindia.com  
contact@imvindia.com

**The Netherlands**

Nifa Technologies  
Pallasweg 22  
8938 AS Leeuwarden

+31 58 2123279  
www.nifa.nl  
info@nifa.nl



www.imv-technologies.com