

2024

EN



EXAPad^{micro}

A new view on
ultrasound

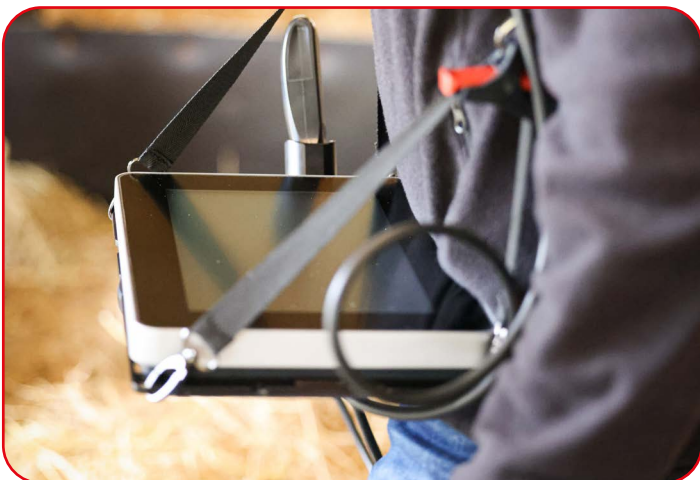


ExaPad Micro

Experience high performance and flexibility with The ExaPad Micro, empowering you to deliver high-quality care to your patients. The ExaPad Micro becomes your all-in-one solution, giving you a new view on ultrasound.

Your on-the-go companion, ideal for in the practice use or on the move, The ExaPad Micro weighs less than 2kg and its user-centric design ensures comfort for you.

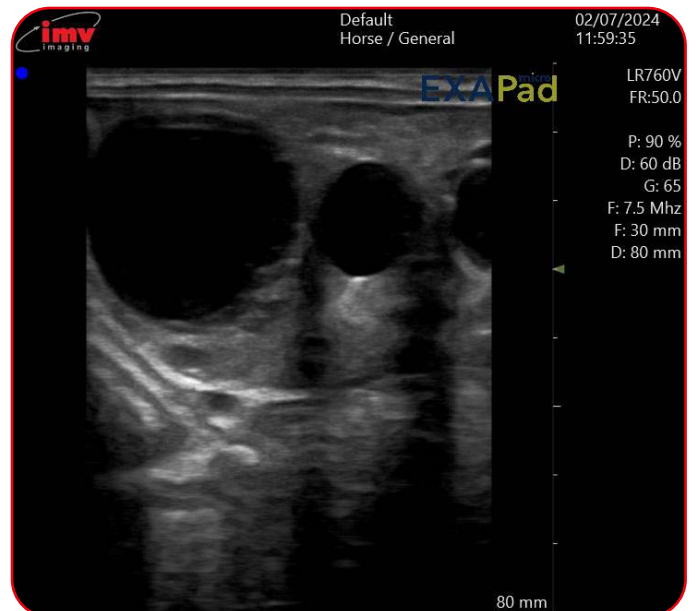
The portable scanner is adaptive to any environment and application, with a comprehensive array of probes and accessories to support you in various scenarios. The ExaPad Micro is designed specifically for veterinary use and with the latest and most advanced technology, giving you the best image quality every time.



Spotlight on - Equine Reproduction

Do more with the Micro

- Comprehensive array of probes for a range of applications
- Purposely designed accessories to support you in any use-case
- Ruggedised machine with magnesium casing and veterinary tested probes
- Teamviewer application for remote support
- Compact and portable scanner



“

We use the ExaPad Micro daily. For all Gynaecology applications. From simple monitoring of carrier mares, to determining the sex of fetuses through gynaecological monitoring. Very beautiful images, practical and easy to store.

- Hubert Terris

EXAPad^{micro}

A new view on ultrasound

Dimensions and weight

Width: 28 cm
Depth: 5.5 cm

Height: 20 cm
Weight: < 2kg without battery

Console design and user interface

1 Probe connector

Integrated SSD (Capacity:
180Go)

1 USB - C

WIFI 802.11 b/g

Bluetooth 4.0

10.1 inch LCD touchscreen

Ultrasound image display;
Portrait – 700x900mm
Landscape – 670x700mm



Operating modes

B mode (Dual Beam,
Steered, CrossBeam)

B/B mode

Colour Flow Mapping (CFM)
Velocity

Dual CFM (B/CFM mode)

PW Simplex

M Simplex

M Anatomic

Probe connections

1 Linear Rectal LR760V

2 Curved Rectal CR460V

3 Linear Tendon L738V

4 Convex C360S

5 OPU E610B/E614B

6 Micro-Convex C614P

Electrical power

Works on interchangeable
battery or on mains supply

Battery autonomy: 1 hour 40
min

Battery recharging time: 3.5
hours

Processing

Digital beamformer

Dual beam computing

32 true emission channels

32 reception channels

256 shades of grey

Accessories

1 Stand

2 Multi-purpose straps

3 External charger

4 Bumper





IMV TECHNOLOGIES. FOR LIFE.



France HQ

📍 IMV Technologies
ZI n°1 Est
61300 L'Aigle

☎ +33 2 33 34 64 64
✉ contact@imv-technologies.com
🏠 www.imv-technologies.com

France (Angoulême)

📍 IMV Technologies
126, Boulevard de la République,
16000 Angoulême, France

☎ +33 (0)5 45 92 03 57
✉ france@imv-technologies.com
🏠 www.imv-technologies.com

United Kingdom

📍 IMV Technologies
Phoenix Crescent, Strathclyde
Business Park, Scotland, ML4 3 NJ

☎ +44 (0)1506 460 023
✉ scotland@imv-technologies.com
🏠 www.imv-technologies.com

North America

📍 IMV Technologies USA
9501 Louisiana Ave N, Suite 300
Brooklyn Park, MN 55445

☎ +1 763 488 1881
✉ contact@imvusa.com
🏠 www.imv-technologies.com

Brazil

📍 IMV Technologies Brazil
R. Vitoriano dos Anjos, 1081
13041-317 Campinas-SP

☎ +55 (19) 2513-3444
✉ contato@imvbrasil.com.br
🏠 www.imv-technologies.com

The Netherlands

📍 Nifa Technologies
Pallasweg 22
8938 AS Leeuwarden

☎ +31 58 2123279
✉ info@nifa.nl
🏠 www.nifa.nl

China

📍 IMV Technologies China
Room 510, Building 1,
NO.800, Naxian Road,
Pudong District, Shanghai,
201203 China

☎ +86 21 50586918 or 50586948
✉ contact@imvchina.com
🏠 www.imvchina.com

India

📍 IMV Technologies India
(IMV India Pvt. Ltd.)
Plot No 750 Phase V, Udyog Vihar
Gurgaon 122016 (Haryana)

☎ +91 124 4770707
✉ contact@imvindia.com
🏠 www.imvindia.com



www.imv-technologies.com